

Some non-linear relations can be modeled using a CURVE of BEST FIT.  
The CURVE OF BEST FIT should:

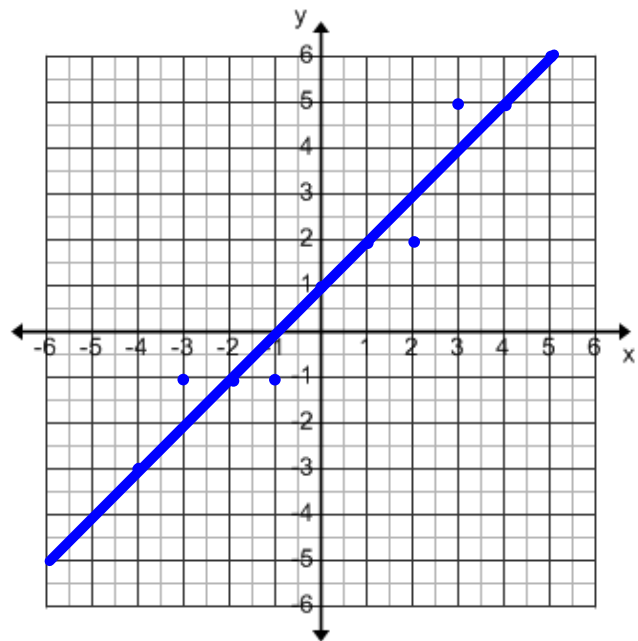
1. Follow the general trend of the data.
2. Pass through as many points as possible.  
(Needs to be a smooth curve.)
3. Divide the rest of the points evenly above and below the line.

\*\*Just like a LINE OF BEST FIT.

Example 1: Plot the following sets of points on a grid. If the points show a linear relationship, draw a line of best fit. If the relation appears non-linear, sketch a curve of best fit.

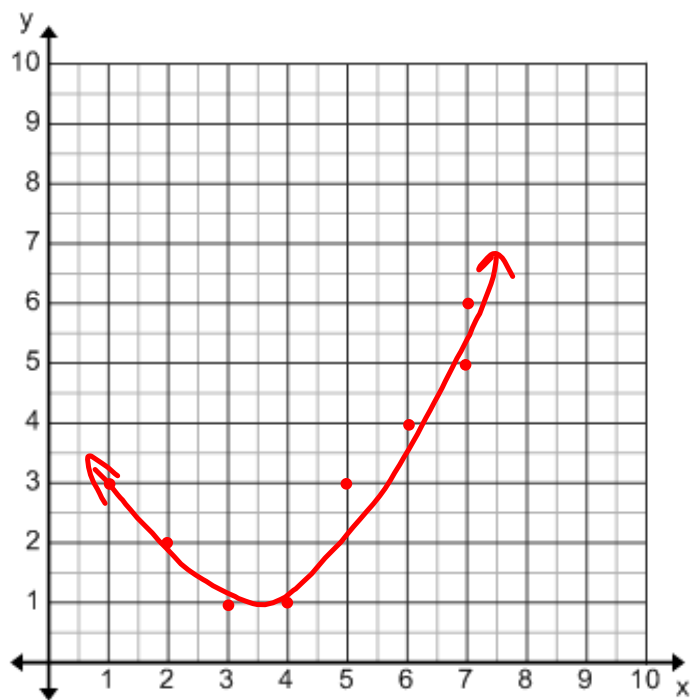
a)

X	Y
-4	-3
-3	-1
-2	-1
-1	-1
0	1
1	2
2	2
3	5
4	5
5	6



b) •

X	Y
4	1
3	1
6	4
5	3
2	2
7	5
1	3
7	6



c)

X	Y
1	10
2	9
3	6
3	4
5	3
7	2
9	1

